

CRYO360))

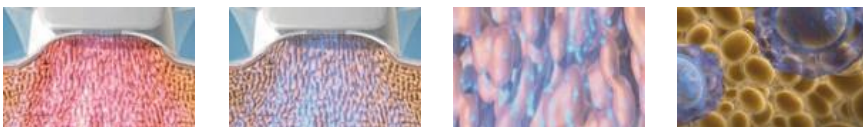
Cryolipolysis device with 2 or 4 handpieces



Effectively eliminate fatty deposits 360°

The 2 CRYO 360 devices are intended for people who wish to permanently get rid of unsightly fatty deposits that resist diet and exercise. The cryolipolysis technique used is not a weight loss solution for obese people but a non-surgical alternative to liposuction. CRYO 360 does not require dietary supplements, medications or diet to be effective. Once the results have been observed after a treatment, a healthy lifestyle is obvious to the patient.

The cryolipolysis principle of the CRYO 360 device is based on the fact that subcutaneous fat cells are more sensitive to cold than other cells. Thus, in the buttocks, thighs, hips or stomach, where fatty cellulite tends to accumulate, the fat cells or adipocytes are the most vulnerable to the cold. Hence the idea of applying cold locally to selectively destroy fat cells, without damaging the surrounding tissues, such as blood vessels, nerves, muscles, skin or epithelial cells.



Heating > Refrigeration > Thermal shock > Crystallization > Apoptosis

Natural elimination of dead fat cells

www.capactuel.com

Capactuel
MEDICAL

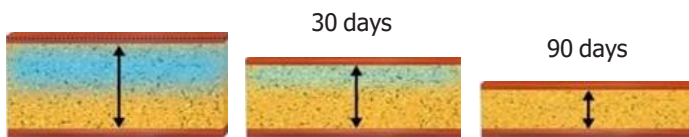
Preventive and Restorative Aesthetic

CRYO360))

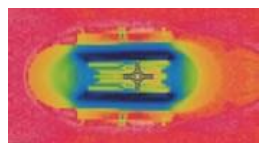
Precise and uniform 360° Cryolipolysis

With 2 or 4 handpieces (depending on the model purchased), 5 interchangeable cartridges of various sizes and shapes (additional heads optional), CRYO360 can treat large and small surfaces separately or simultaneously. The cold energy emitted makes it possible to quickly reach a temperature below 5°C which will change the triglycerides from a liquid to solid state. Crystallized, fat cells age prematurely, die (apoptosis), and then through the normal metabolic process, are gently eliminated and excreted, so that the fat layer is reduced. Before the cooling of a treated area, an emission of heat produces a thermal shock which will stimulate blood circulation, thus facilitating the action of the device on the fat cells.

Gradual reduction of the fat layer



Partial cooling of the treated area or uniform 360°



Classic side emission



CRYO 360 uniform emission

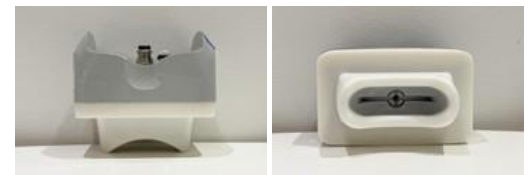
2 Devices for significant time saving

- CRYO360 device with 2 handles to treat 1 or 2 areas simultaneously, 4 handles to treat up to 4 areas simultaneously.
- > 5 interchangeable cartridges using a practical "Plug-and-Play" system (additional heads optional).
 - > Uniform thermal emission without blind spots at 360°.
 - > Thermal emission and negative pressure are controlled separately and adjustable in stages. Non-invasive and risk-free damage the surrounding tissues, CRYO 360 allows a reduction of excess fat cells in complete safety.
 - > Thermal shock with heat emission before cooling.
 - > Anti-freeze films of various sizes that protect the skin.
 - > No recovery period. Apoptosis process, natural expulsion of dead cells make it possible not to hinder daily activity.
 - > Soft, colorless, odorless and easy to apply medical silicone heads.

Display screen	15.6 inch large LCD
Cooling	5 level from 1 to -11°C
heating	4 level 37 to 45°C
Aspiration	5 level from 10-50Kpa
Processing time	1-99min (default 60min)
Input voltage	110V/220V
Output power	1000W
Fuse	15A
Machine sizes	50 (L) × 45 (W) × 107 (H) cm
Machine weight	67.5 kg

www.capactuel.com

Capactuel - 20-22, rue Richer - 75009 Paris - info@capactuel.com



Cartridge 1. Level fat : 10-15mm
Double Chin, Armpits, Knees.



Cartridge 2 . Level fat : 20-25mm
Abdomen, Belly, Lower back, Under buttocks.



Cartridge 3. Level fat : 20-25mm
Lower belly, Abdomen, Back.



Cartridge 4. Level fat : 15-25mm
Abdomen, Inner thigh, Back, Arms.



Cartridge 5. Level fat : 20-30mm
Thighs, Hips, Lower back, Love handles, Belly.

- Kit of 6 cartridges of your choice

- Combination 1

1 x Cart. 1 - 1 x Cart. 3 - 2 x Cart. 4 - 2 x Cart. 5

- Combination 2

1 x Cart. 1 - 2 x Cart. 2 - 1 x Cart. 3 - 2 x Cart. 4

Possibility to build your own kit.